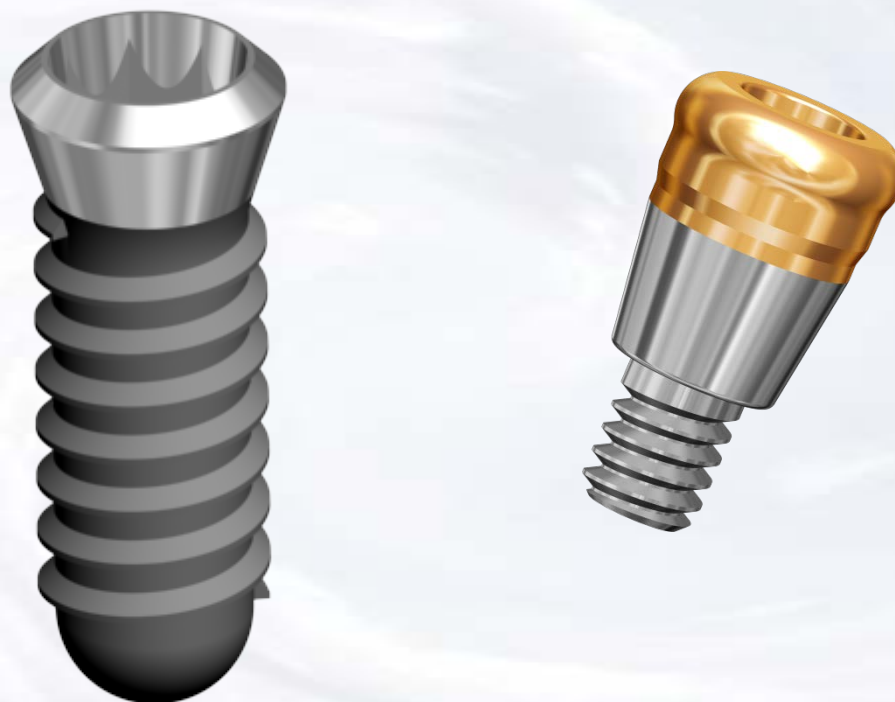
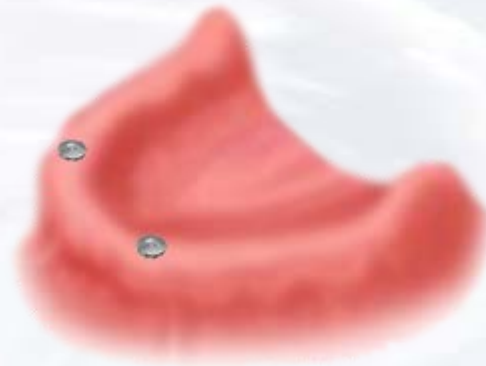


Overdenture Laboratory Technique for Tissue Level Implant with Super Snap



Blue Sky Bio

Overdenture Laboratory Technique for Tissue Level Implant with Super Snap








The presentation that follows lists only one combination of parts. Obviously the clinical situation may call for substitution of another part on this slide



Blue Sky Bio

Overdenture Laboratory Technique for Tissue Level Implant with Super Snap

	Size	Part #
	Torque/Ratchet Wrench	TR-900-01
	Thumbwheel/ITI Wrench Adapter	ITI-Adapter
	.048 Hex Driver short	SDS048
	.048 Hex Driver long	SDL048
	Insert Placement/Removal Instrument	TFSU

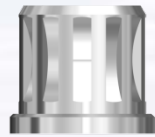
Prosthetic instruments needed



Blue Sky Bio

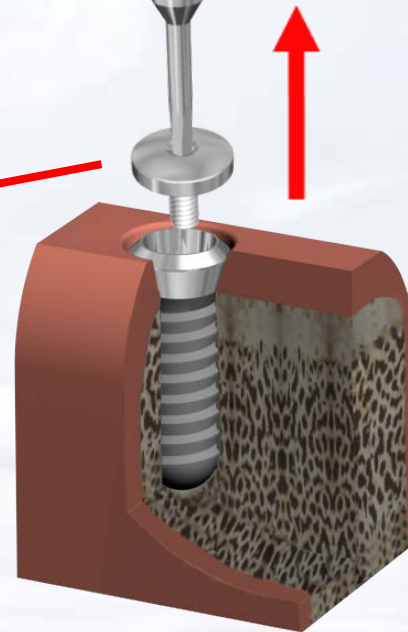
Overdenture Laboratory Technique for Tissue Level Implant with Super Snap

Assemble screw driver with ITI - Adapter (thumb-wheel / adapter)

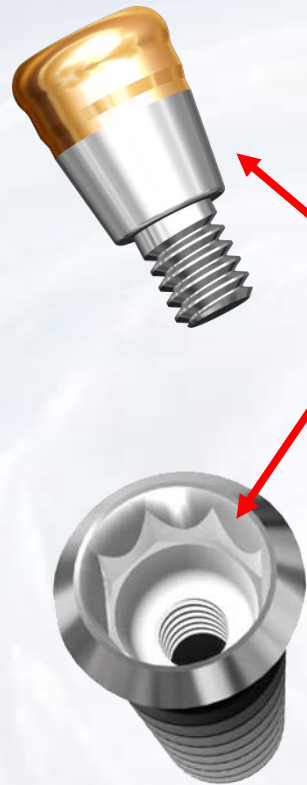


Insert assembled screw driver into cover screw and turn counter clockwise

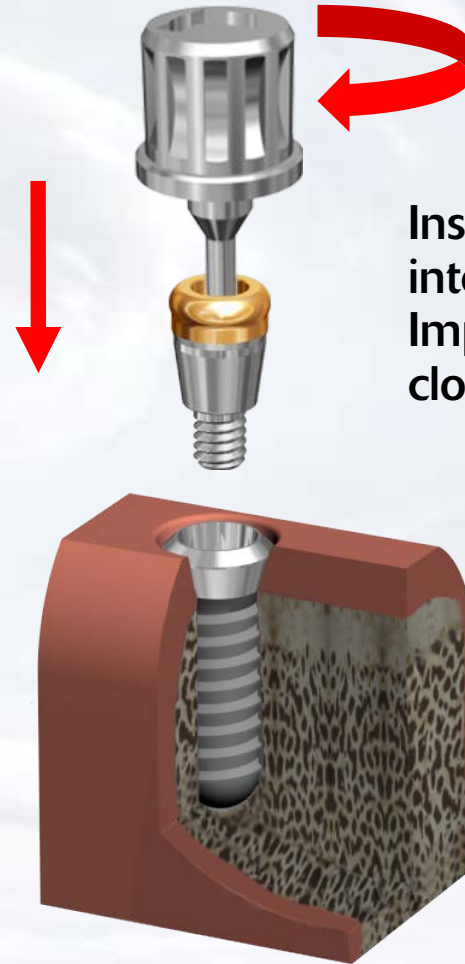
Remove cover screw from implants



Overdenture Laboratory Technique for Tissue Level Implant with Super Snap



8 degree Morse taper on the outside of the abutment
Matches the 8 degree Morse taper within the implant



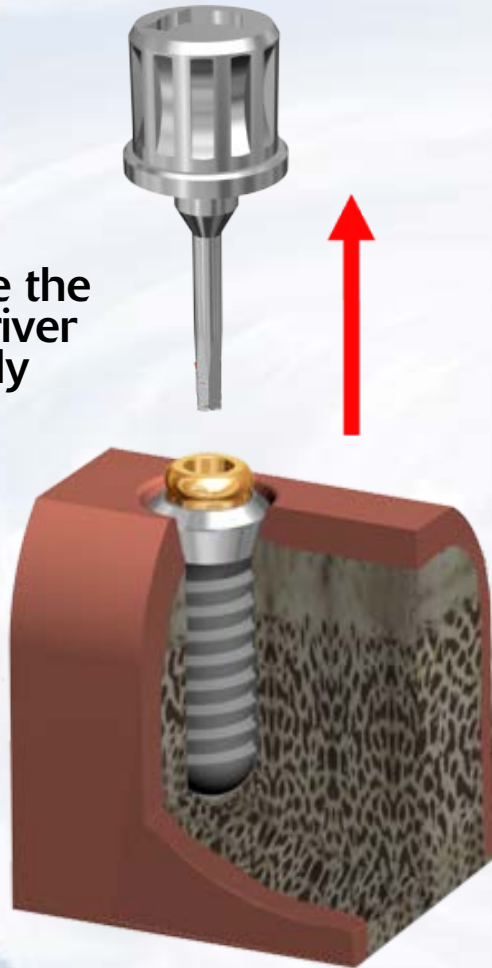
Insert the abutment into the One Stage Implant and rotate clockwise until snug



Blue Sky Bio

Overdenture Laboratory Technique for Tissue Level Implant with Super Snap

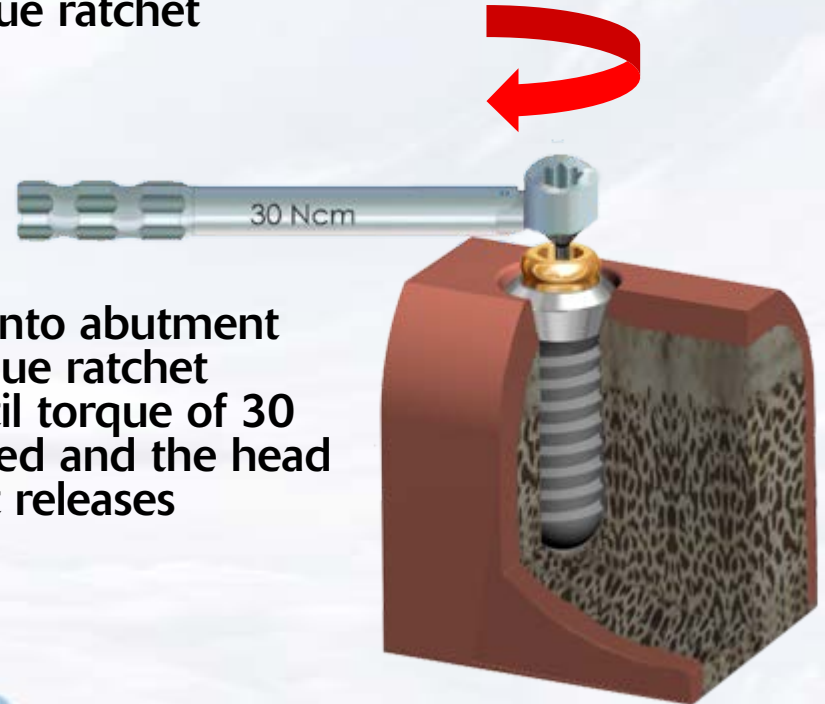
Remove the screwdriver assembly



Insert the Hex Driver within the 30Ncm torque ratchet

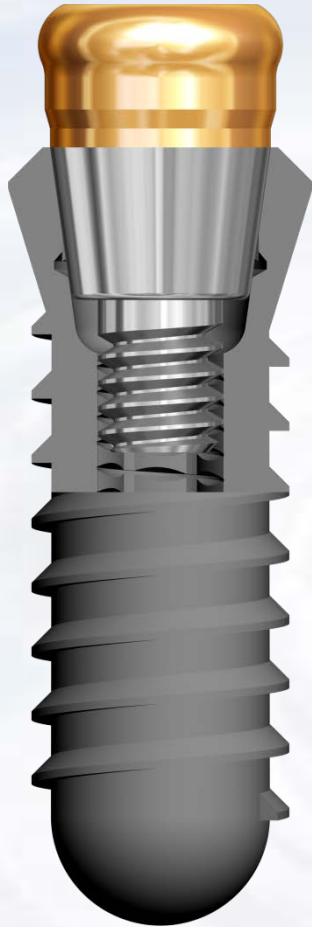


Insert driver into abutment and turn torque ratchet clockwise until torque of 30 Ncm is reached and the head of the ratchet releases



Blue Sky Bio

Overdenture Laboratory Technique for Tissue Level Implant with Super Snap



When the overdenture abutment is screwed into the implant at 30-35 Ncm the Morse taper will lock the abutment in place.

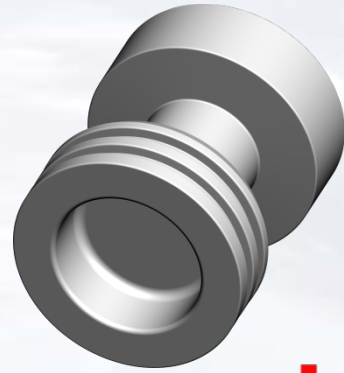


Abutments in place

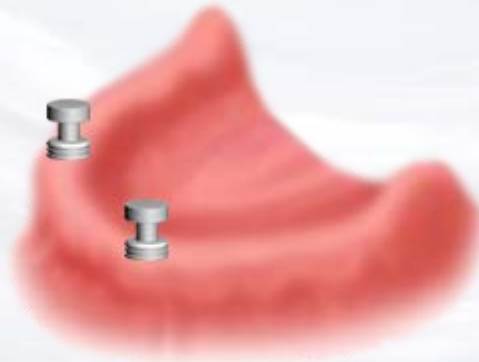


Blue Sky Bio

Overdenture Laboratory Technique for Tissue Level Implant with Super Snap

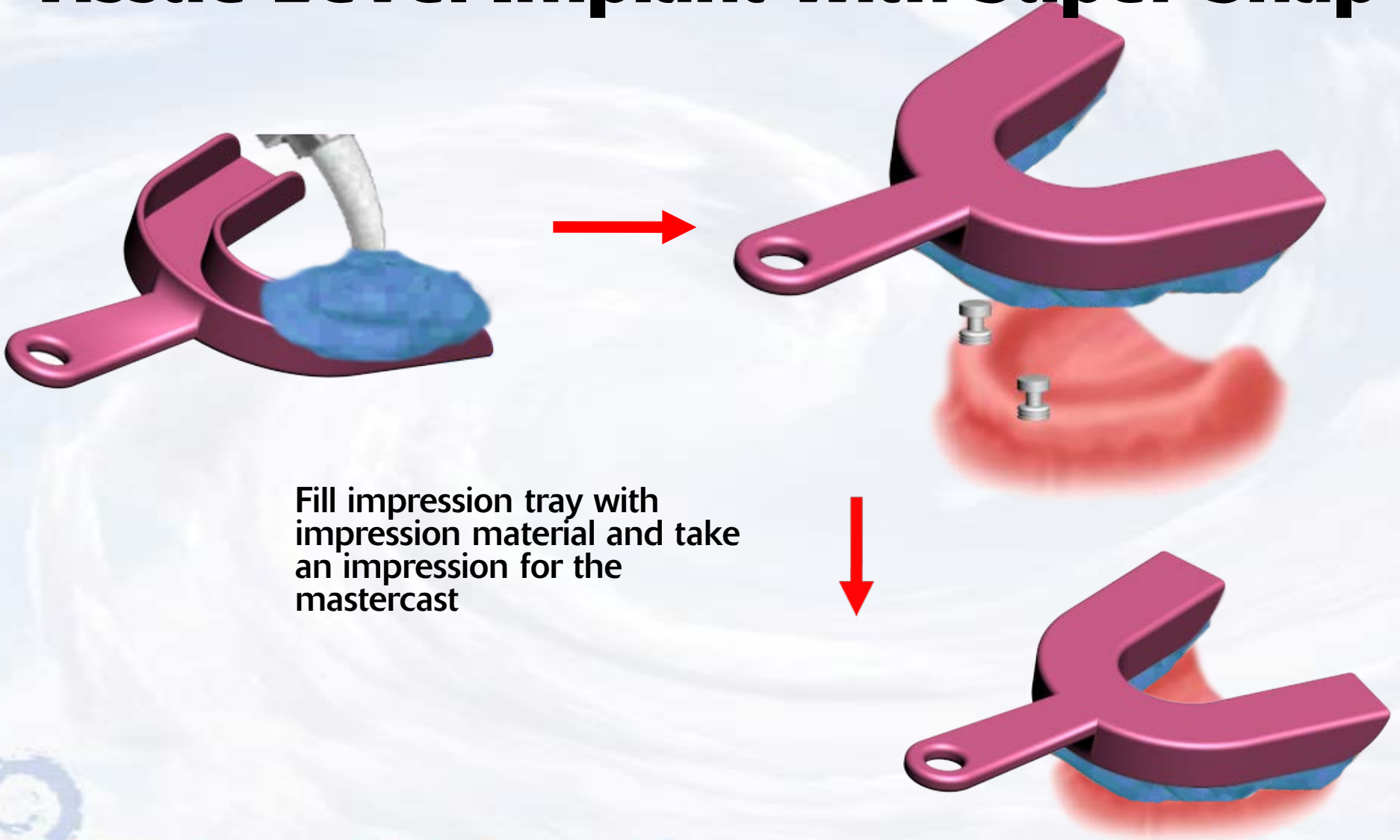


Snap impression transfer
on the abutments



Blue Sky Bio

Overdenture Laboratory Technique for Tissue Level Implant with Super Snap



Fill impression tray with impression material and take an impression for the mastercast



Blue Sky Bio

Overdenture Laboratory Technique for Tissue Level Implant with Super Snap



After impression material has set remove impression from mouth picking up the impression transfers

Snap analogs into the impression transfers



Blue Sky Bio

Overdenture Laboratory Technique for Tissue Level Implant with Super Snap



Pour impression with model stone and make master cast with analogs in place



Blue Sky Bio

Overdenture Laboratory Technique for Tissue Level Implant with Super Snap



Put yellow insert on the analogs



Blue Sky Bio

Overdenture Laboratory Technique for Tissue Level Implant with Super Snap

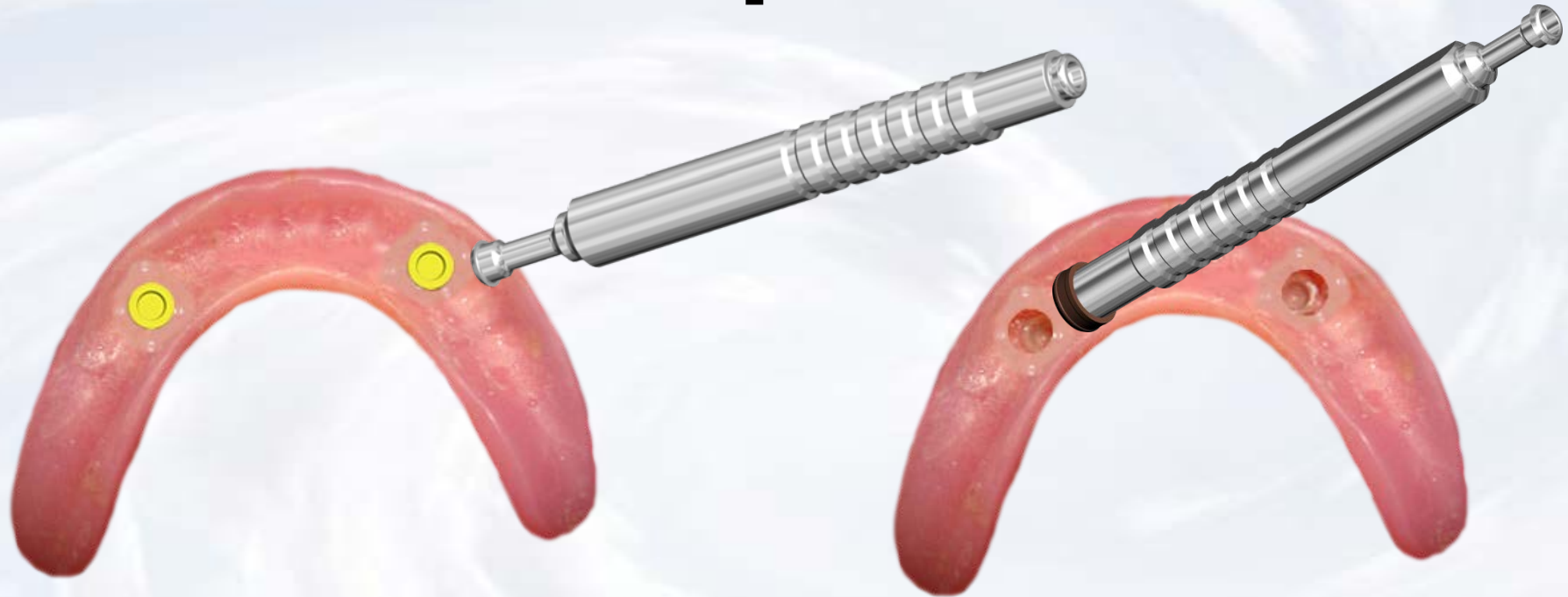


Process the denture



Blue Sky Bio

Overdenture Laboratory Technique for Tissue Level Implant with Super Snap (Optional)



Remove the insert you want to change with the sharp point of the removal instrument

Place the insert with the desired retention into the denture with the opposite side of the removal instrument



Blue Sky Bio